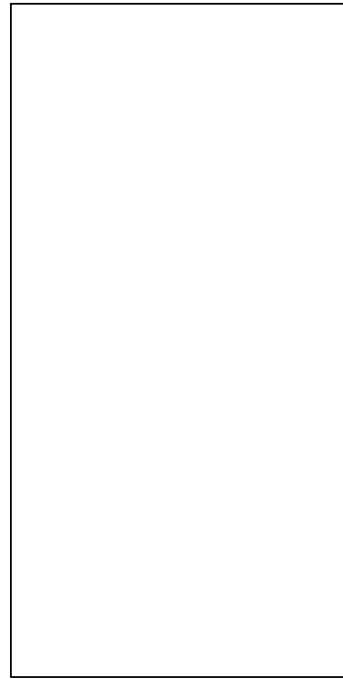
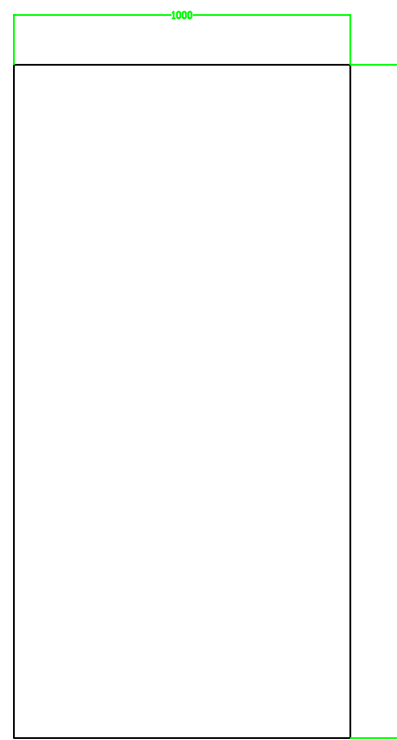


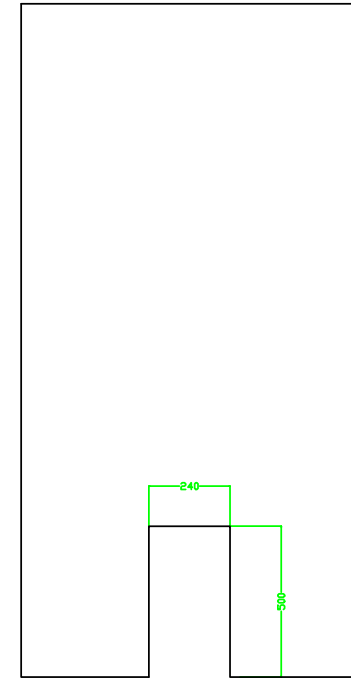
Door w/ holes for lock. Min. thickness 20 mm



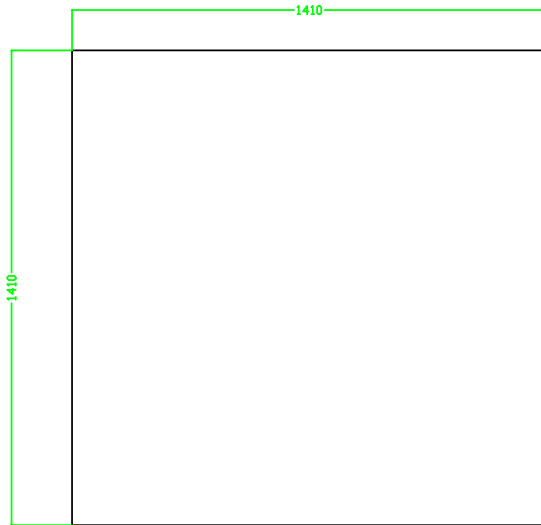
Side wall  
Min. thickness 20 mm



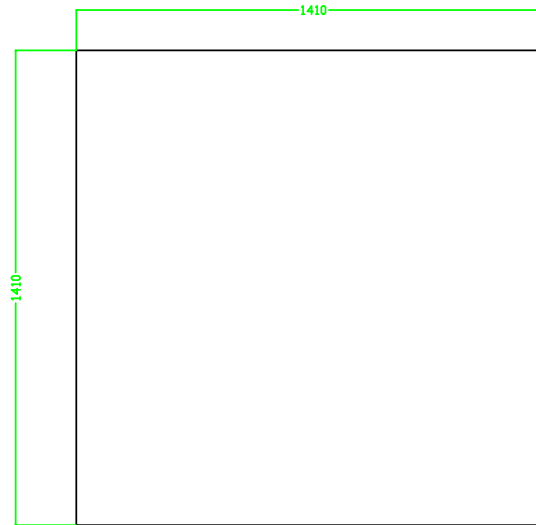
Side wall  
Min. thickness 20 mm



Back wall with hole  
Min. thickness 20 mm



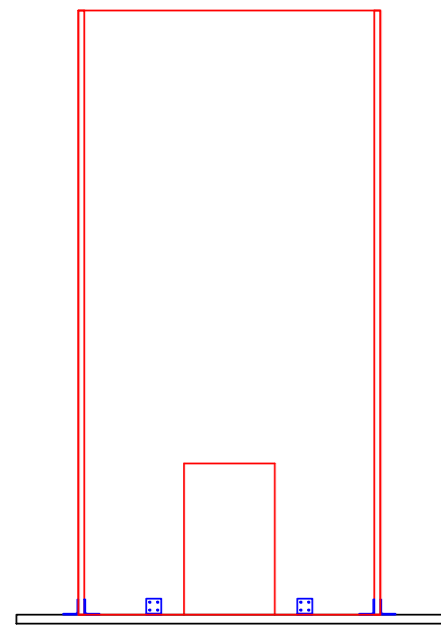
Floor. Min. Thickness 30 mm



Roof. Thickness 10 - 20 mm  
or metal plate

1- Secure the walls to the floor with steel brackets in the shown positions

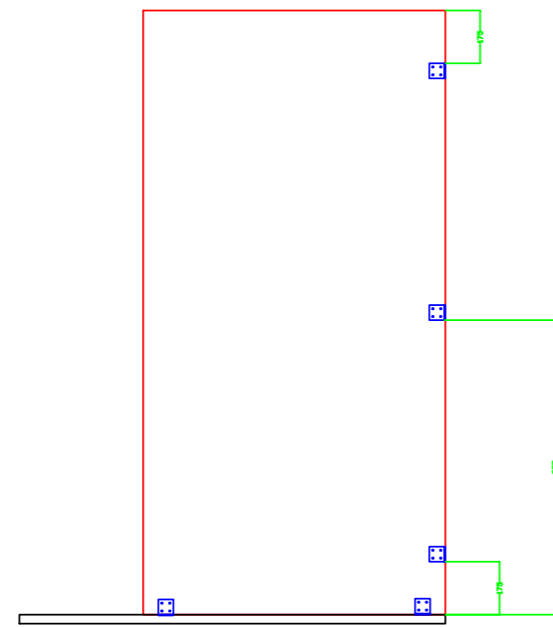
Top and front views



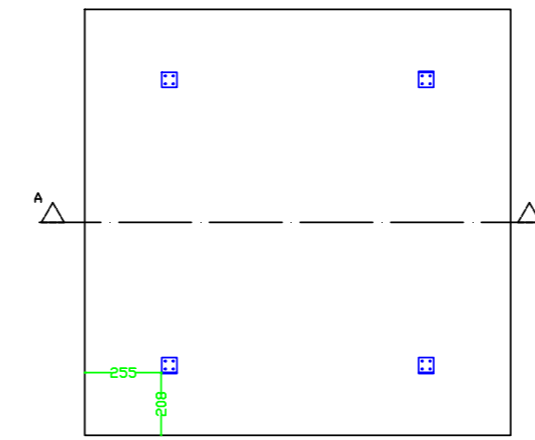
Front view

2- Secure the walls to each other with steel brackets

Top and side views

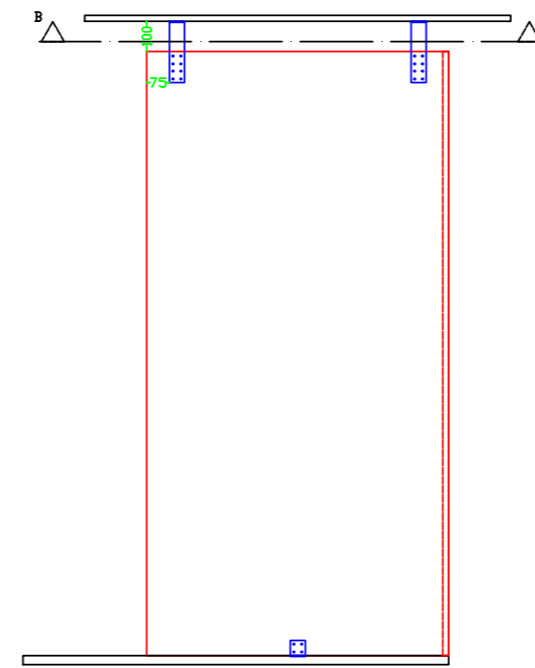


Side view



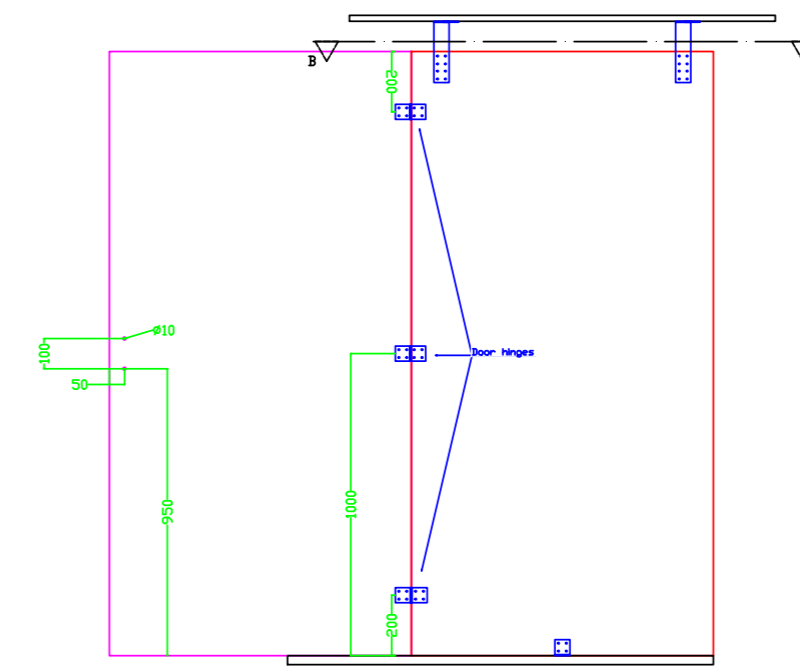
3 - Secure the roof to the walls with steel brackets.

Section views A-A and B-B

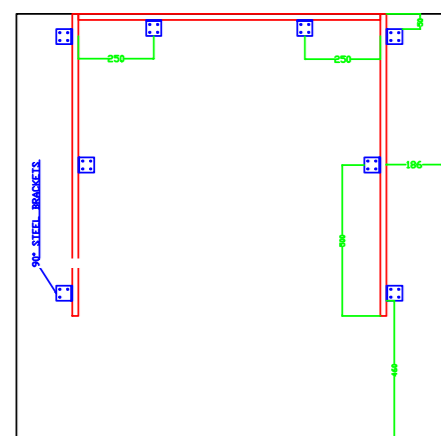


4 - Secure the door to the corresponding side wall with steel hinges.

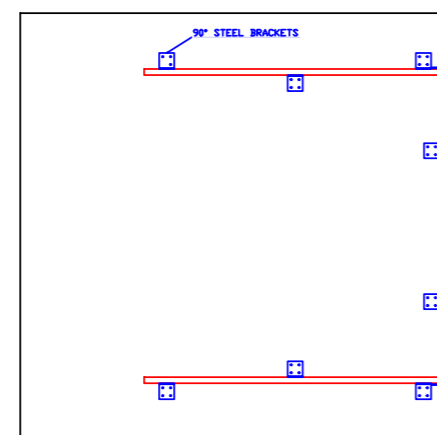
Sections A-A and B-B



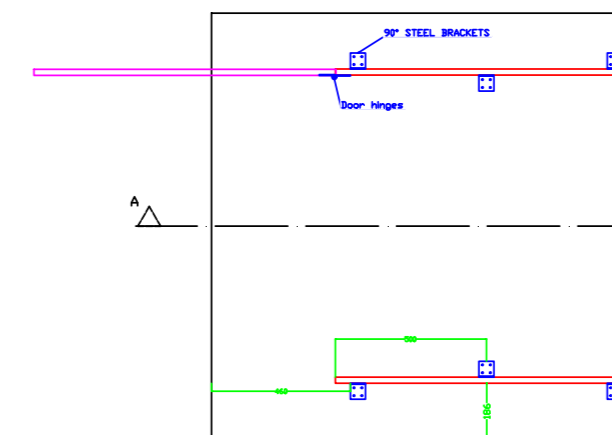
- roof and floor panels
- side walls panels
- door panel
- steel brackets and hinges



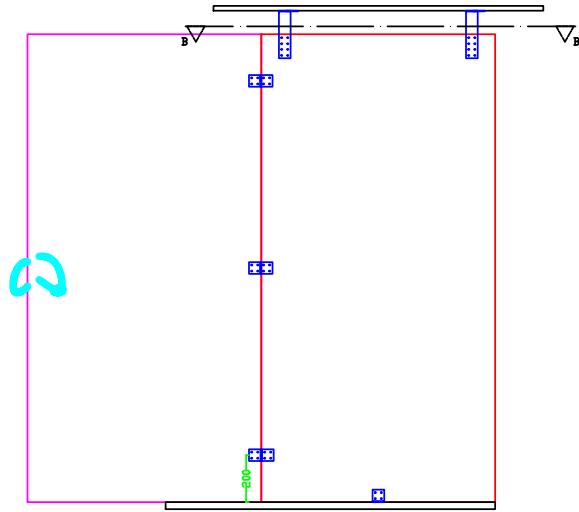
Top view








Top view

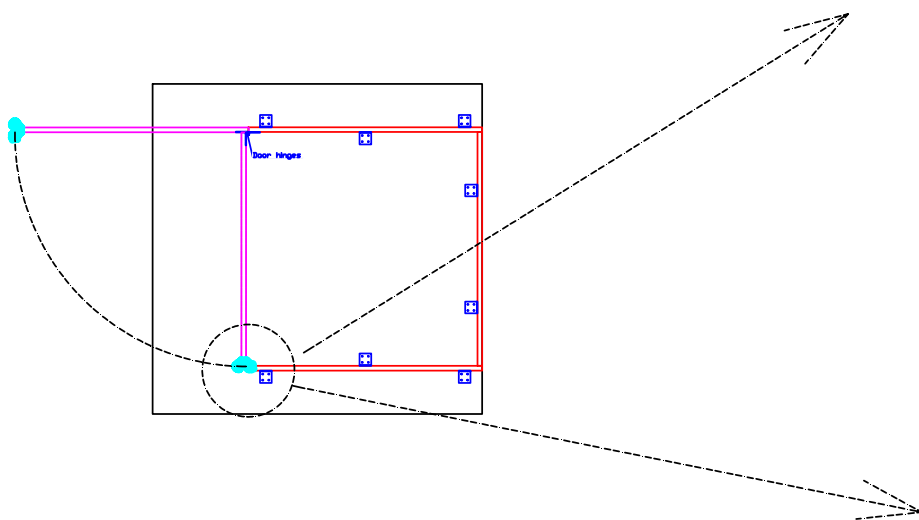
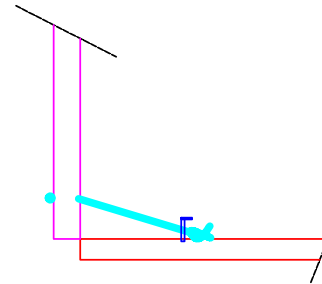


1 - Take 400 - 500 mm string and tie a loop through the holes in the door

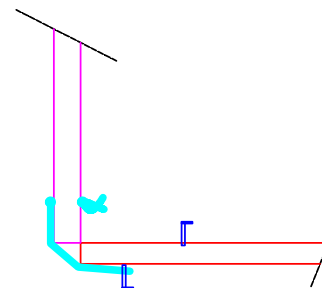


-  roof and floor panels
-  side walls panels
-  door panel
-  steel brackets and hinges
-  strings

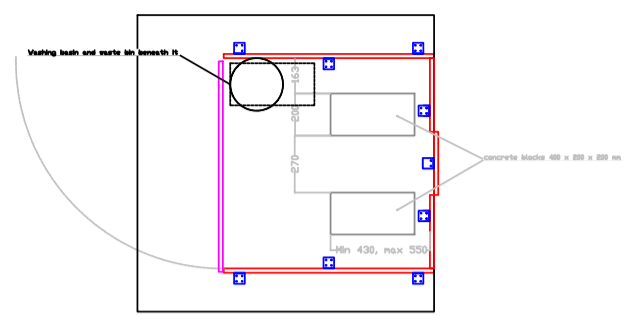
2 - Detail: door closed from inside by securing the string loop to the inner peg or L-shaped nail



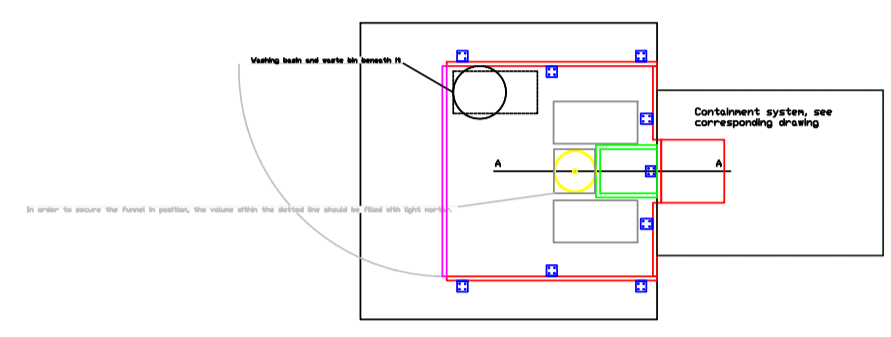
3- Door closed from outside by securing the loop to the outer L-shaped nail or peg



First step fix the concrete blocks to the floor with Portland cement or sand-cement mortar. Screw the hinge to the floor just at the central line of the back side

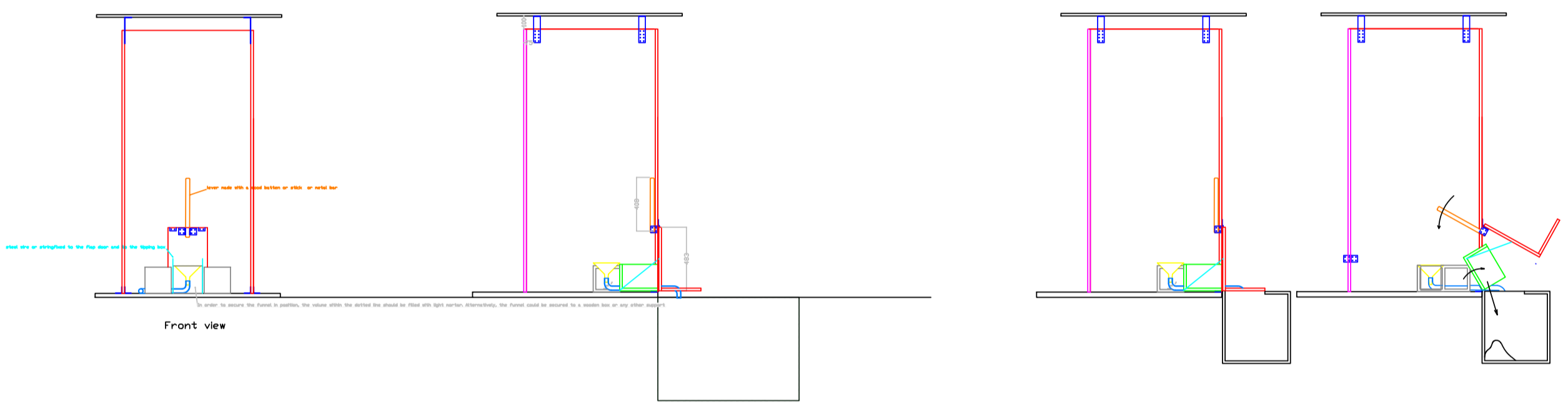


TDP VIEW

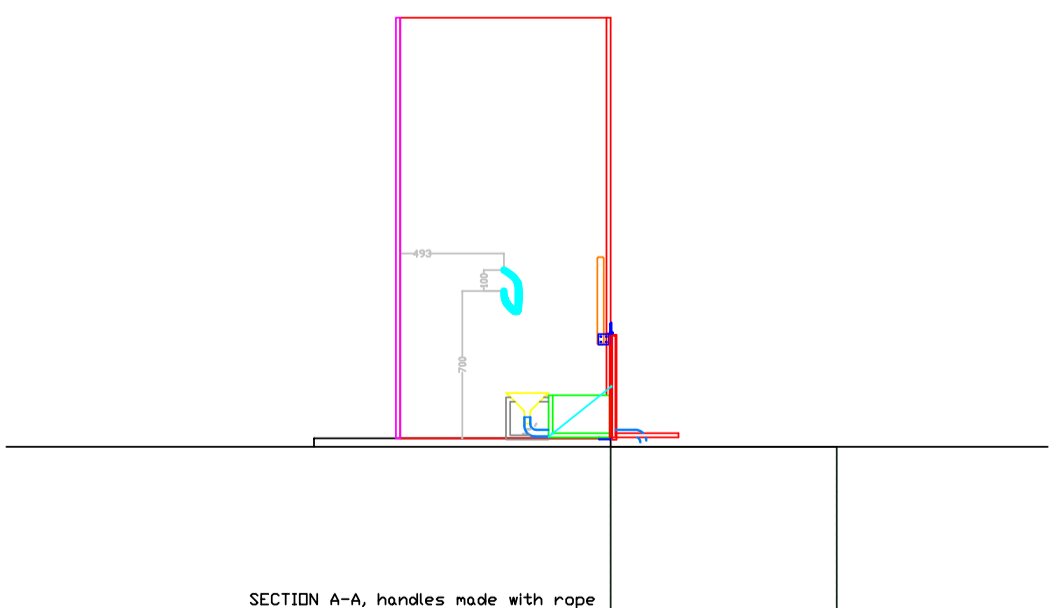
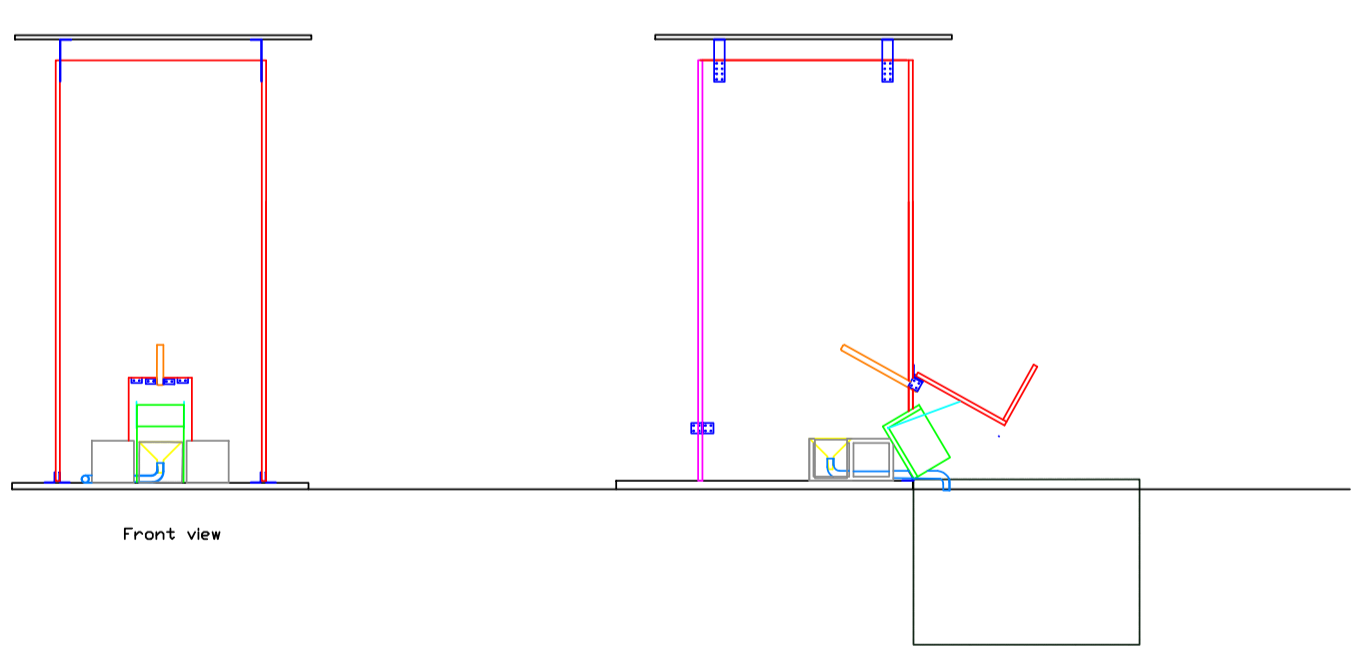


- concrete blocks
- roof and floor panels
- side wall panels
- door panel
- steel brackets and hinges
- box with handle, hinged to the floor

SECTION A-A, box in rest position



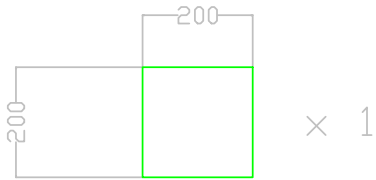
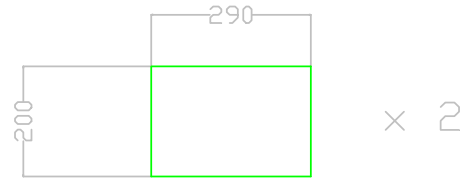
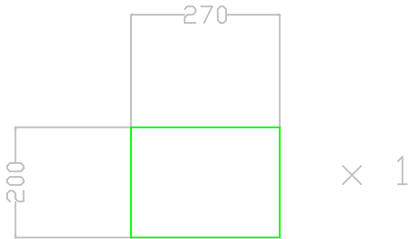
SECTION A-A, box tipped in dump position



SECTION A-A, handles made with rope loops, help elders or pregnant women to squat. Drill two holes in each side wall, make a loop of rope passing through them and insert the rope into a section of plastic tube or bamboo culm to form a handle before closing the loop with a knot.

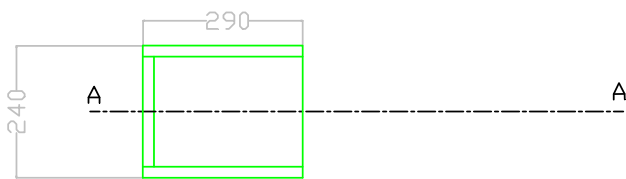
construction of the box with timber planks, 20 mm x 200 mm

Required parts

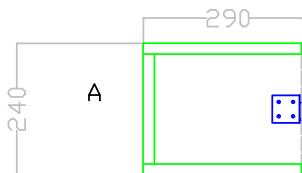


Assembly with nails or wood screws

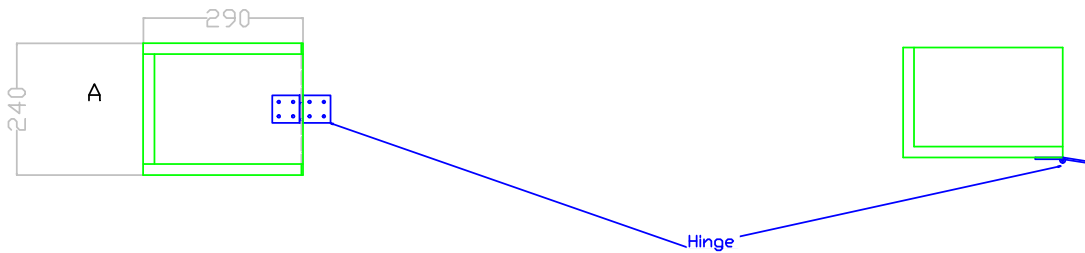
Top view



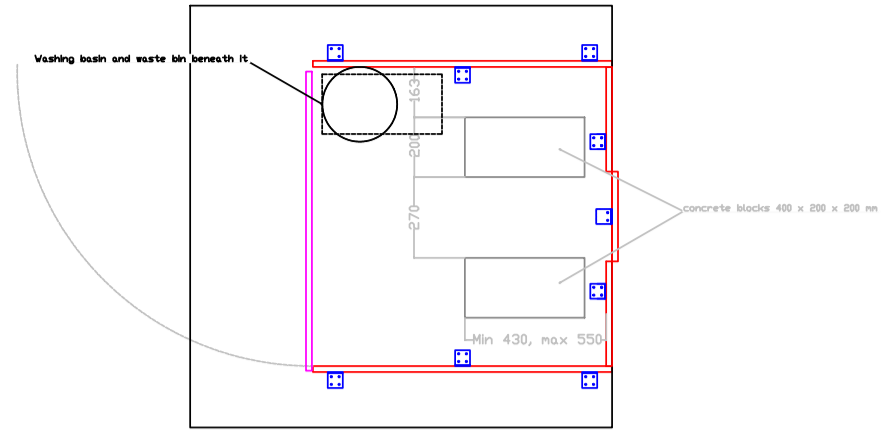
Bottom view



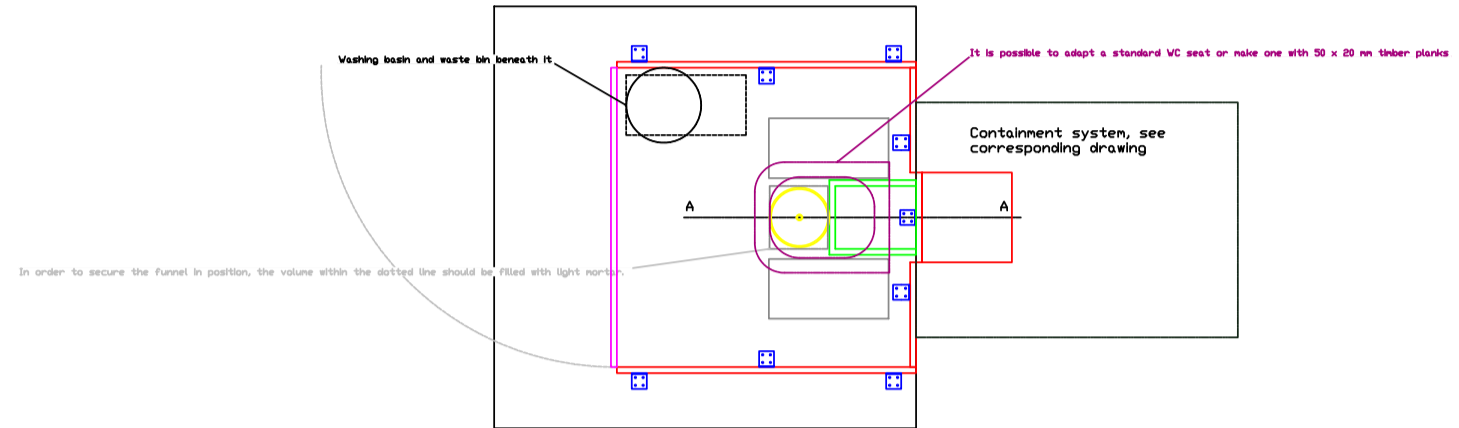
Section A-A



First step: fix the concrete blocks to the floor with Portland cement or sand-cement mortar. Screw the hinge to the floor just at the central line of the back side

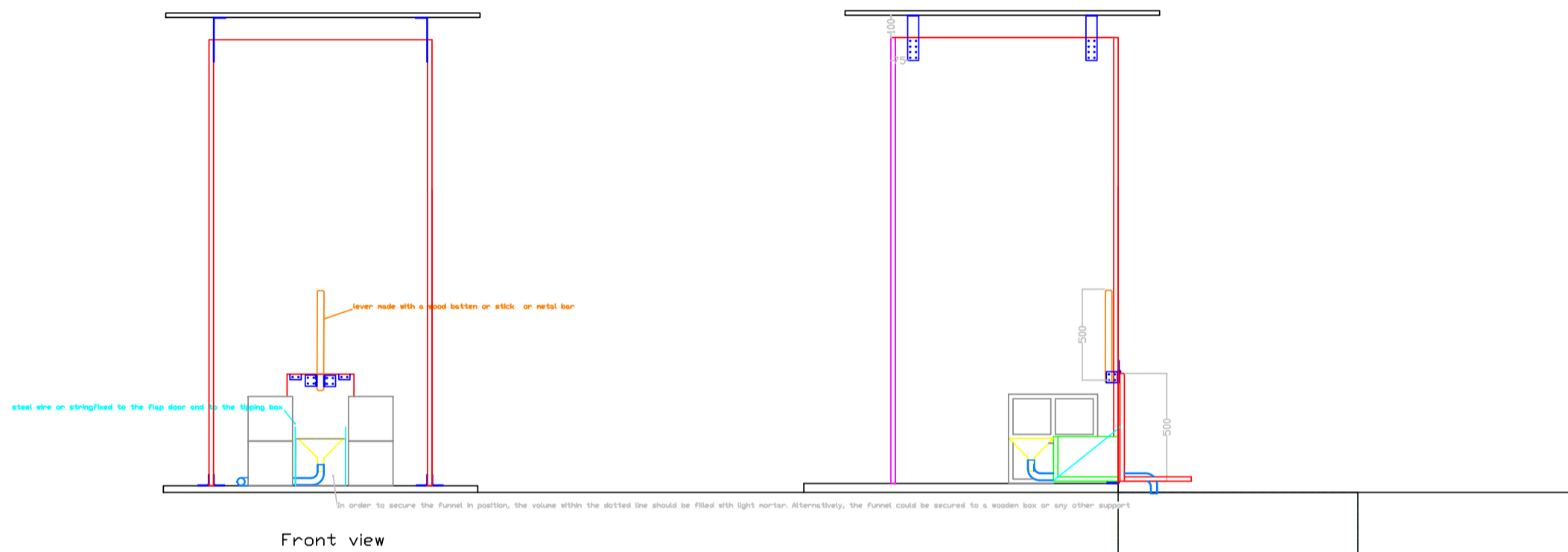


TOP VIEW



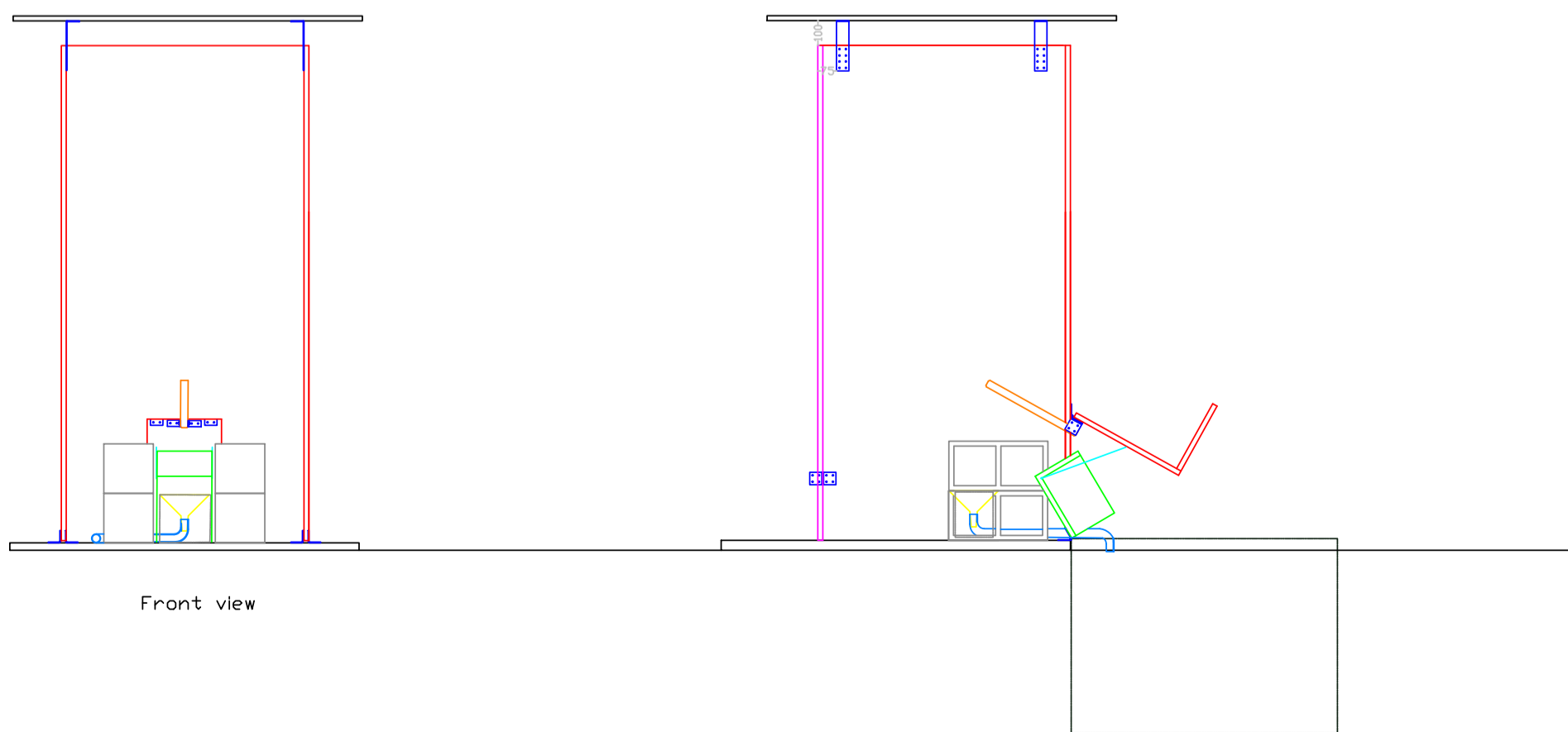
- concrete blocks
- roof and floor panels
- side walls panels
- door panel
- steel brackets and hinges
- box with handle, hinged to the floor

SECTION A-A, box in rest position



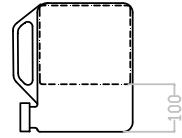
Front view

SECTION A-A, box tipped in dump position



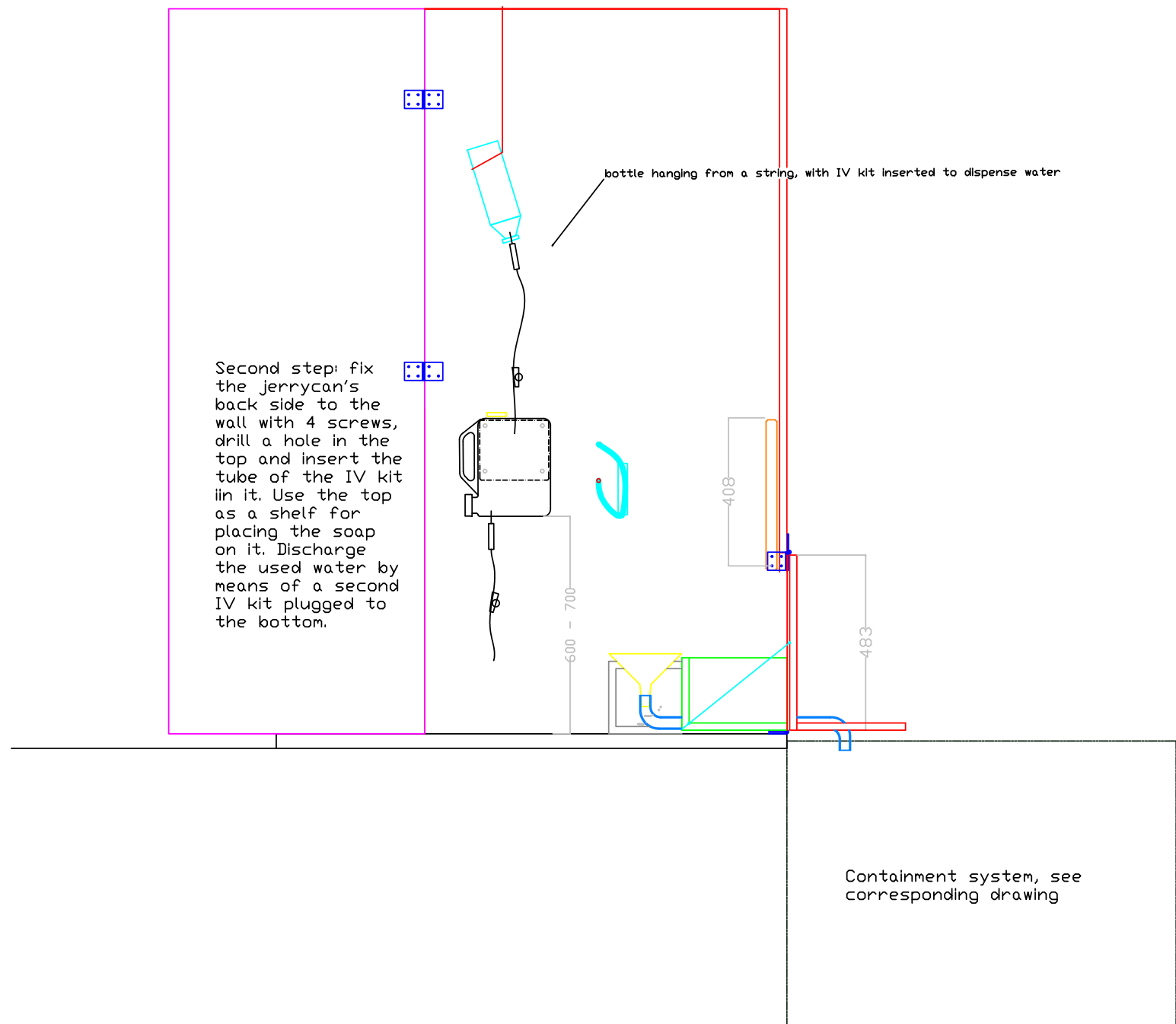
Front view

First step: cut a window on the jerrycan's side

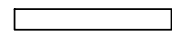


Second step: fix the jerrycan's back side to the wall with 4 screws, drill a hole in the top and insert the tube of the IV kit in it. Use the top as a shelf for placing the soap on it. Discharge the used water by means of a second IV kit plugged to the bottom.

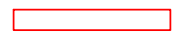
bottle hanging from a string, with IV kit inserted to dispense water



concrete blocks



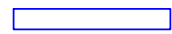
roof and floor panels



side walls panels



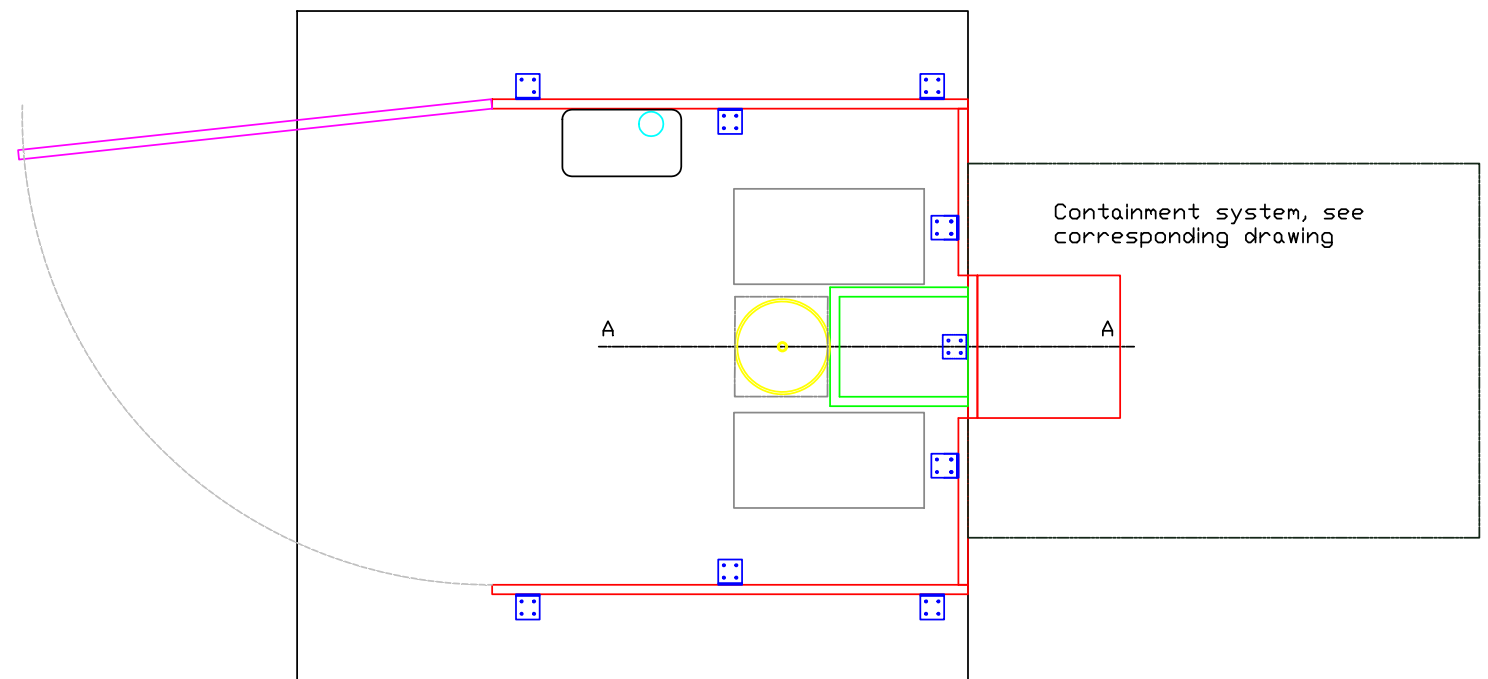
door panel






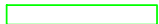


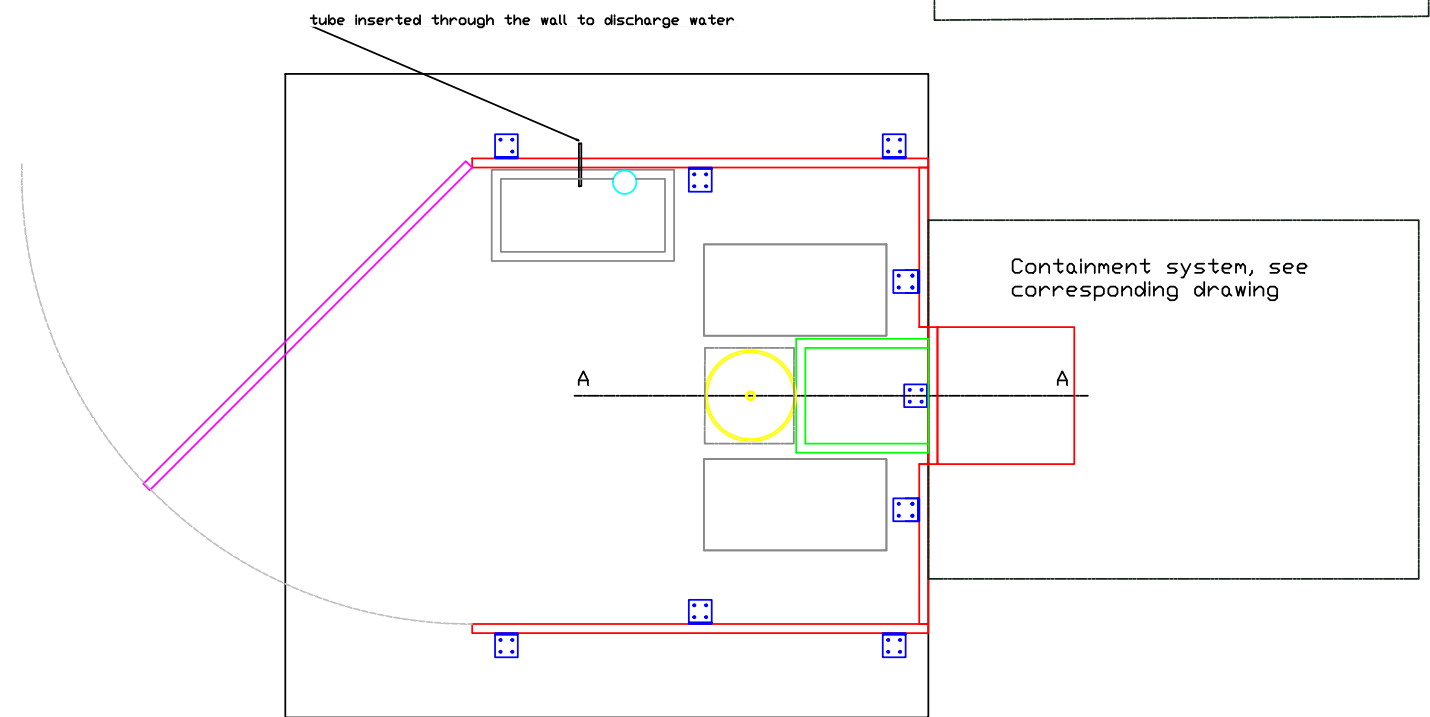
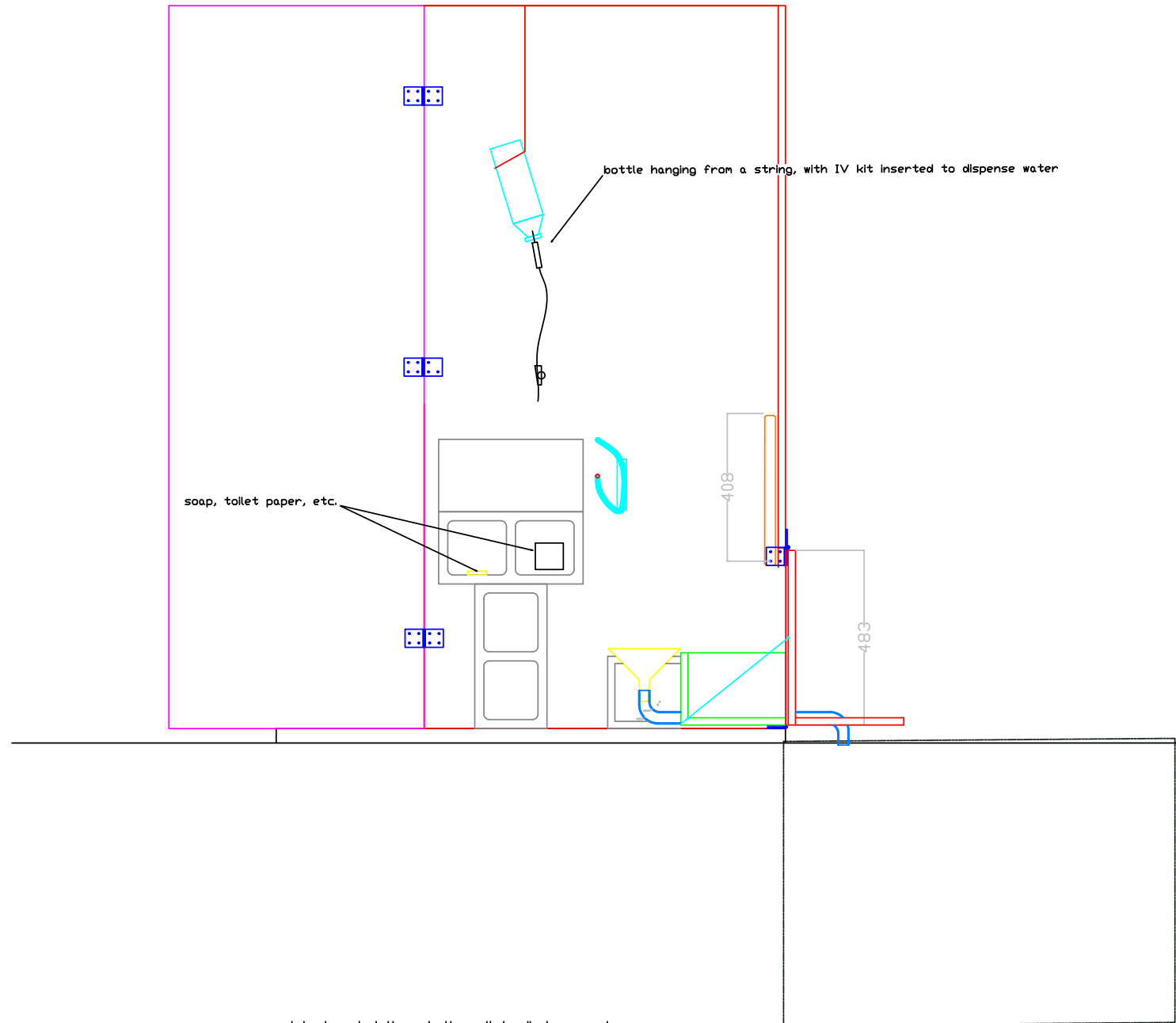
steel brackets and hinges



box with handle, hinged to the floor

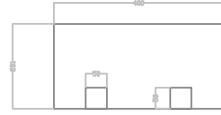


-  concrete blocks
-  roof and floor panels
-  side walls panels
-  door panel
-  steel brackets and hinges
-  box with handle, hinged to the floor





First step: take 8 hollow blocks (40 x 20 x 10 cm) and drill or cut 2 holes (about 5x5 cm) on one side.

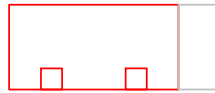


Side view

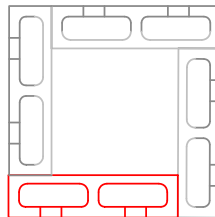


Top view

Second step: place 4 of the said blocks on a flat floor, the holes facing outside. Three of them must be cemented, the remaining (shown in red) will be mobile.



Front view

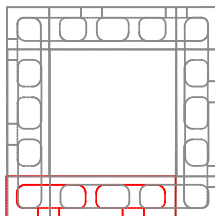


Top view

Third step: place 4 blocks (no holes) on the first row, as directed. Pay attention not to cement the mobile one at the base (shown in red).

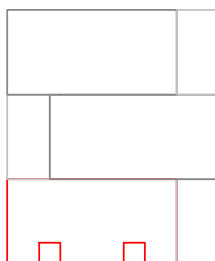


Front view

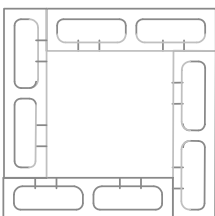


Top view

Fourth step: place the remaining 4 blocks on the third row, with their holes facing inside.

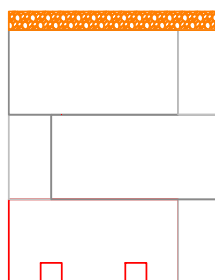


Front view

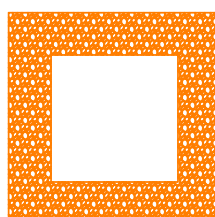


Top view of the last row

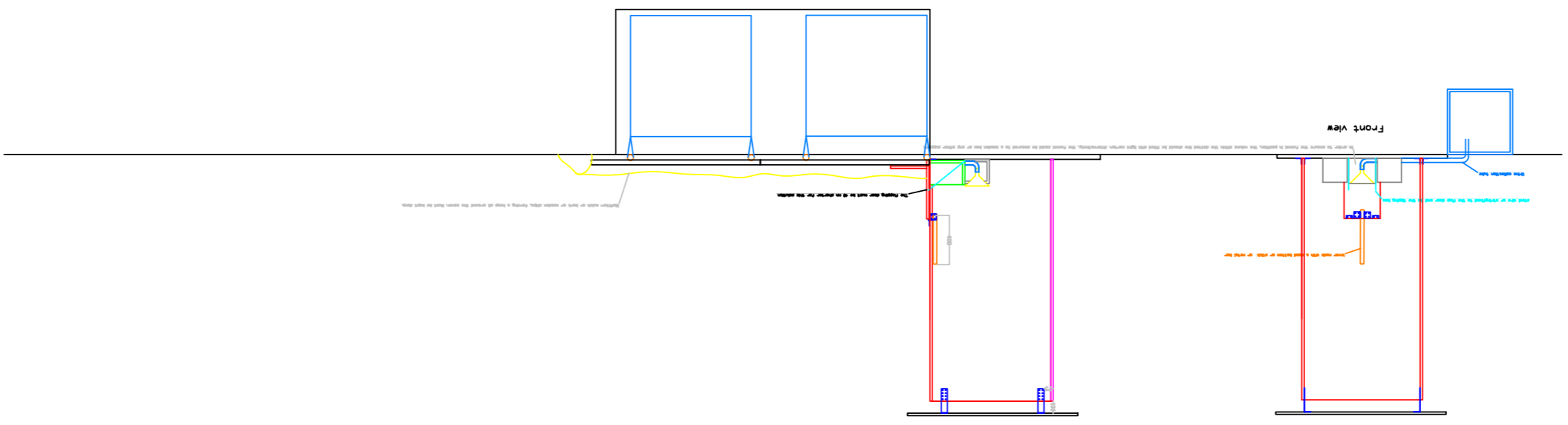
Fifth step: Close the top of the blocks with light mortar, or clay, or some stones



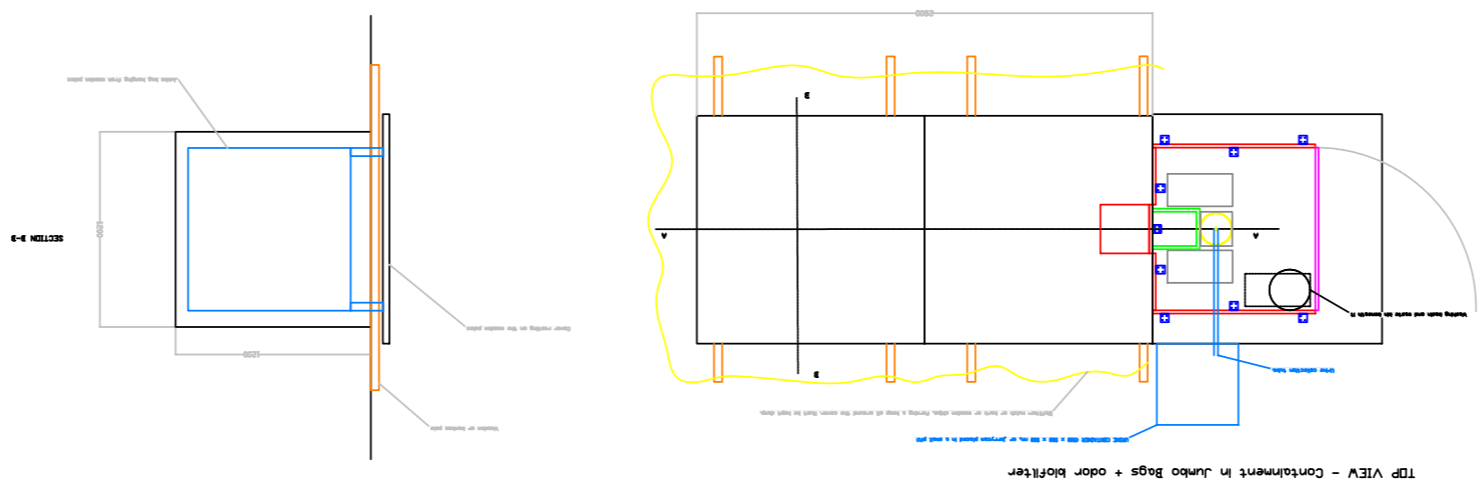
Front view



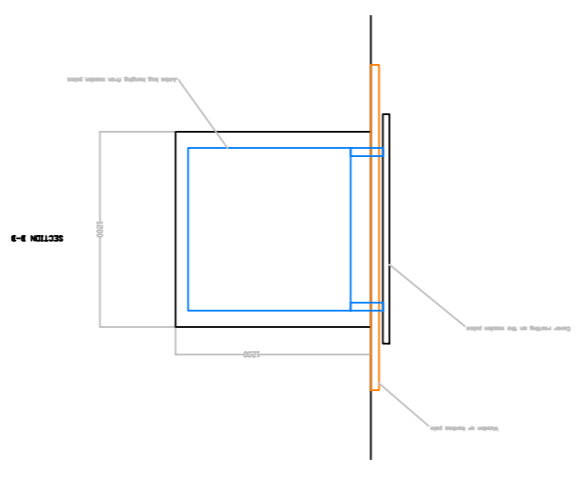
Top view of the last row



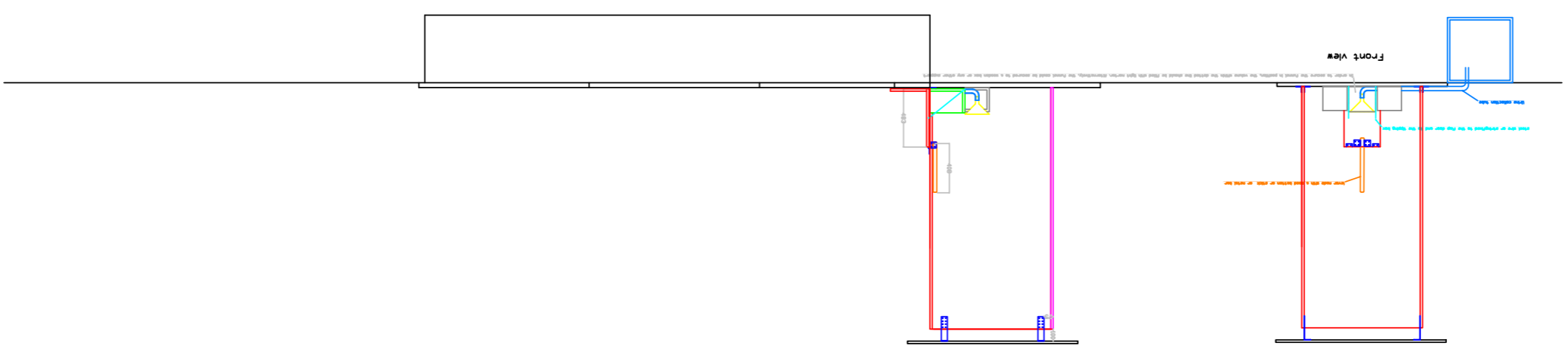
SECTION A-A, box in rest position



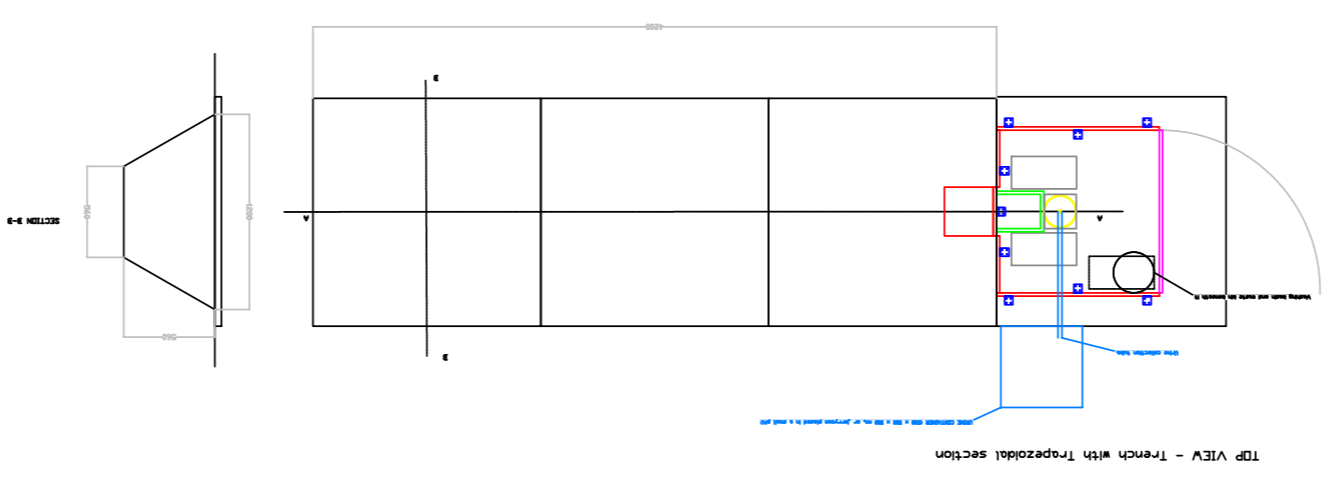
TP VIEW - Containment in Jumbo Bags + odor blifter



SECTION B-B



SECTION A-A, box in rest position



TP VIEW - Trench with Trapezoidal section

- box with handle, height to the floor
- steel structure and floor
- steel panel
- steel wall panels
- steel and floor panels
- concrete blocks